

Tightness is what matters.



CONNECTION AND REPAIR OF PIPES

 **HERMETICA SF**



CASING//
Stainless steel
AISI 304L or 316L.

WIDTHS//
Available in widths of
135mm and 200mm.

DETAIL//
Bi-labial gasket

PRODUCTION RANGE

WIDTHS/// Available in widths of 135mm and 200mm.

LOCKS// 1 or 2 closures for new fittings or repairs.

DIAMETERS// from 60mm to 2000mm.

Covering all diameters in between.

PRESSURES// From 0 to 40 bar*.

*Depending on the diameter.

MATERIAL SPECIFICATIONS:

CASING// Stainless steel AISI 304L or 316L.

SCREWS// Stainless steel AISI 304 / 316, with Teflon coating.

SHAFTS// Stainless steel AISI 304L or 316L.

GASKET/// E.P.D.M. according regulation UNE EN 681.

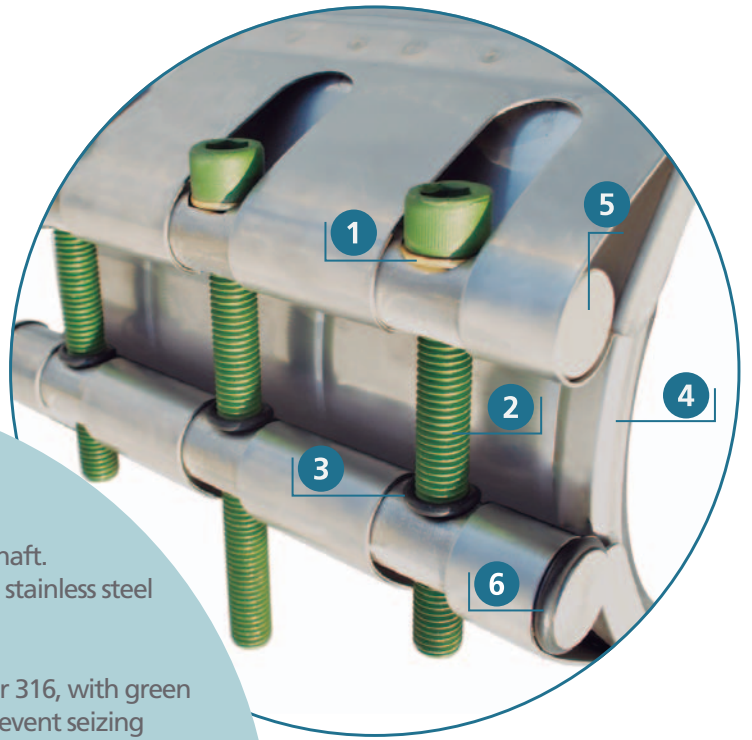
Compatible with drinking water according French ACS and/ or WRAS certifications.

TECHNICAL SPECIFICATIONS:

TEST PRESSURE = WORKING PRESSURE X 1.5

WORKING TEMPERATURE: -10°C to +65°C

For other materials, please ask the manufacturer.

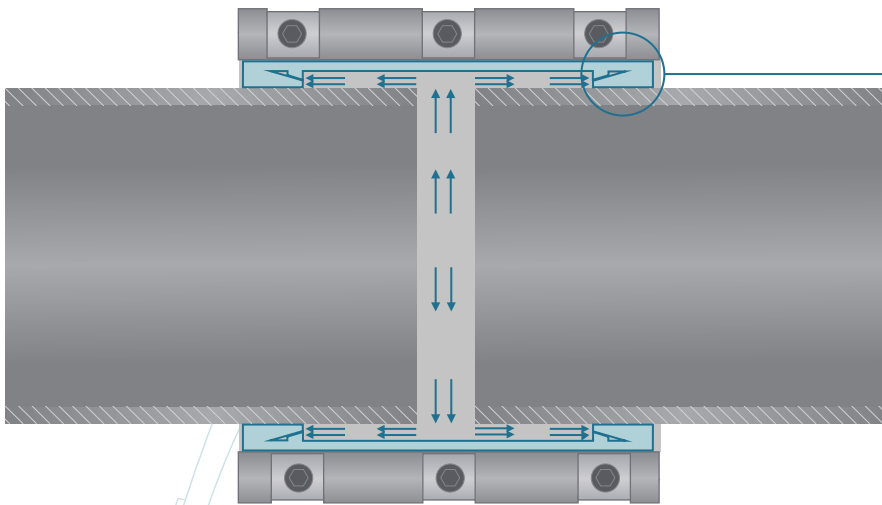


- 1** Brass washer between screw head and shaft. Minimizes the high friction between the stainless steel parts, securing the torque.
- 2** Screws made of stainless steel, AISI 304 or 316, with green Teflon coating. Anti-seizing system to prevent seizing between stainless steel parts.
- 3** When fitting the clamp, we recommend opening it on the side equipped with the o-rings to prevent that screws fall down.
- 4** Reinforcement sheet welded to the casing to prevent it from moving or falling down.
- 5** Solid, stainless steel shafts in AISI 304 or 316, specially mechanized for optimum screw head settling.
- 6** Special design that permits the complete opening of the coupling while preventing that any parts fall out and get lost.

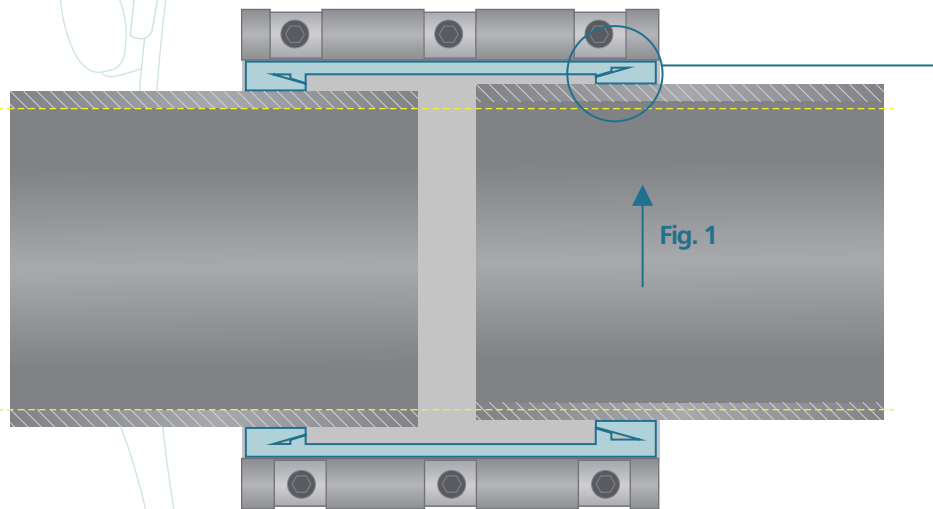
FITTING ADVICE:

- 1** Measuring and selection: All tolerances stated in this catalogue refer to the OD of the pipe.
- 2** Cleaning: Eliminate any existing irregularities on the surface in the area of application.
- 3** Fitting: Tighten the screws evenly. On locks with three screws, tighten the central screw first and then the outer ones alternately.
- 4** Torque: Apply the torque stated on the clamp. Never exceed the indicated torque.
- 5** For more information and fitting advice, see www.hermeticasf.com/video.

Self-sealing action. Actuation with vibrations.



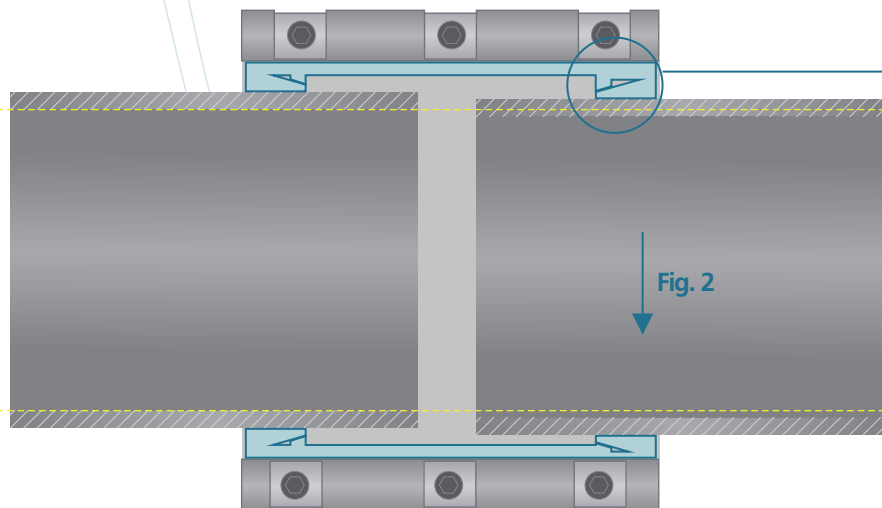
SELF-SEALING//
The interior pressure improves the tightness.



ACTUATION WITH VIBRATIONS//
Flexible behaviour of the rubber with pipe movements, vibrations or subsidence.

Fig. 1// Vertical movement upwards.

Fig. 2 // Vertical movement downwards.



- 1 HERMETICA SF clamps are used for the connection of pipes as well as to repair them.
- 2 They can be applied with pipes made by different manufacturers, different production years and of all kinds of material: asbestos cement, cast iron, steel, polyethylene, PVC, polyester, GRP, etc...
- 3 They can be fitted easily. You only need one tool and one or two workers, depending on the diameter.
- 4 Typical applications are:
 - / Water distribution.
 - / Sewage networks.
 - / Irrigation networks.
 - / Fire fighting systems.
 - / Sea water pipelines.

ONE CLOSURE FOR PIPE ASSEMBLY, ALL- STAINLESS STEEL AISI 304L OR 316L

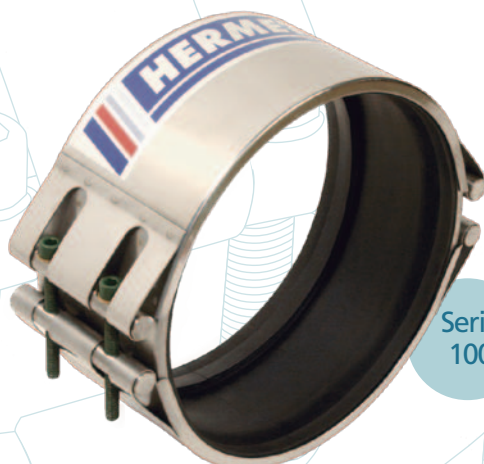
WIDTH 135 mm



Serie
S-500

TWO CLOSURES FOR PIPE ASSEMBLY AND PIPE REPAIR STAINLESS STEEL AISI 304L OR 316L

WIDTH 135 mm



Serie
100

WIDTH 200 mm



Serie
2000

Maintenance and Repair.

COMMON PROBLEMS



Crack or burst or deteriorated pipe wall



Damaged RK joint

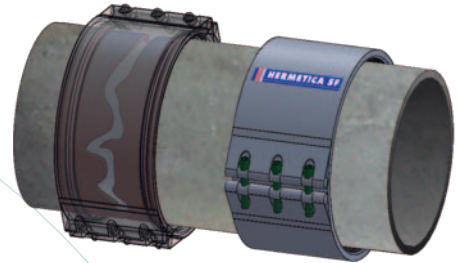


Gibault joint

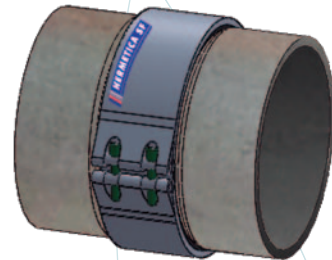


Damaged section

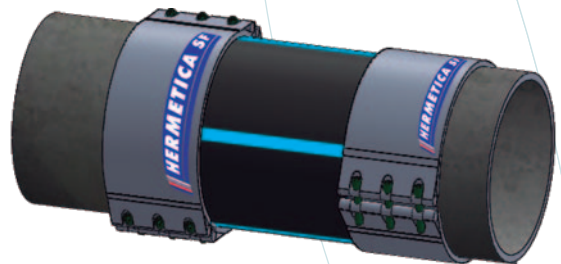
SUGGESTED SOLUTIONS



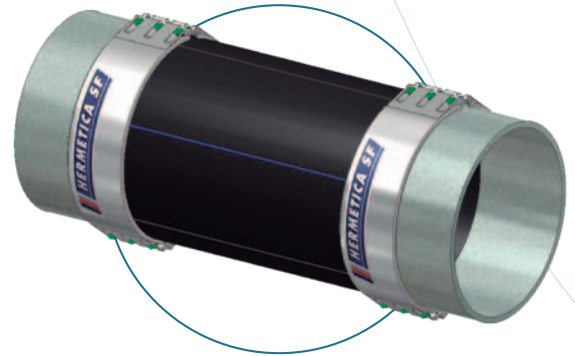
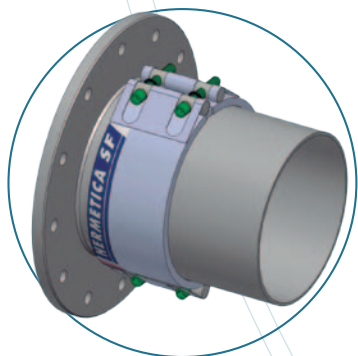
Place a HERMETICA SF clamp over the damaged area



1/ Dismantle joint
2/ Fit HERMETICA SF clamp over the pipes' ends



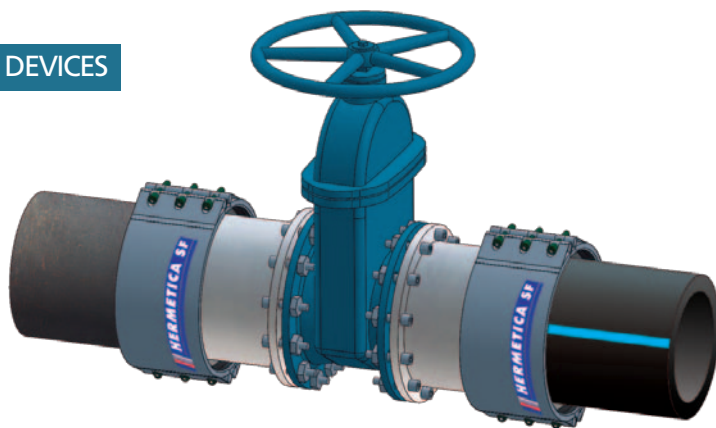
Use two HERMETICA SF clamps and a piece of joining pipe



Improvement and extension of networks.

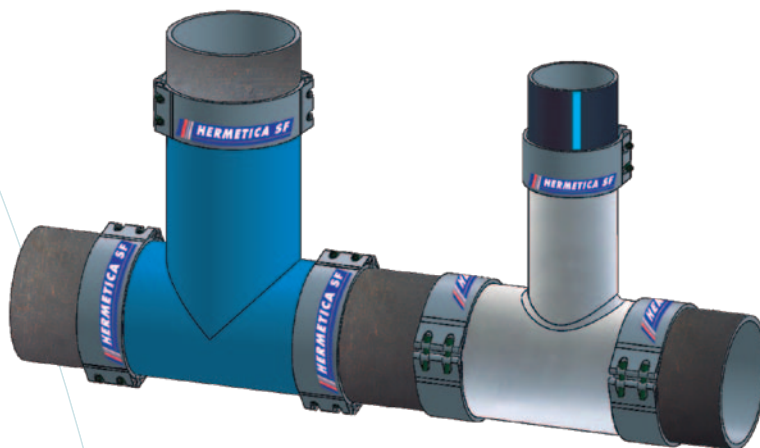
INSTALLATION OF CONTROL AND REGULATION DEVICES

- Dismantling joint
- Facilitates fitting
 - Reduces installation time



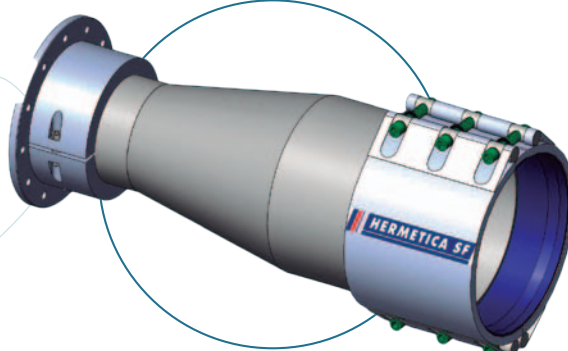
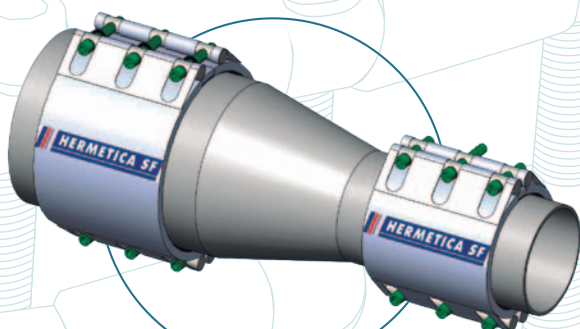
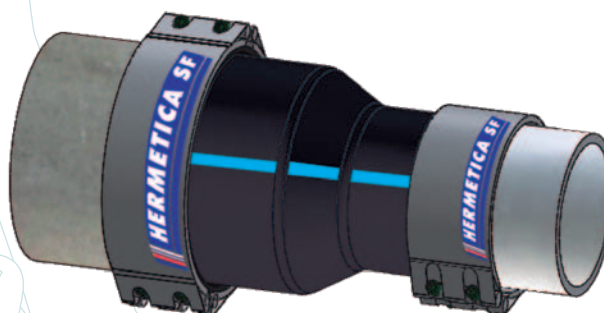
BRANCHES

- Installation of branches and connections
- Eases axial and radial tensions in both directions of the pipe's axis.



CHANGES IN DIAMETERS

- Installation of reductions
- Allows for axial expansion actions and contraction caused by variations in temperature.



Examples.



Fig. 1 / Fitting of an intermediate piece in a large diameter GRP pipe.



Fig. 2 / Underwater fitting. HERMETICA SF clamp made of Duplex stainless steel.



Fig. 3 / Assembly of pipes and accessories made of different materials.



Fig. 4 / Assembly of cast iron pipes and accessories.



Fig. 5 / Installation of an inspection point in a large diameter pipe.

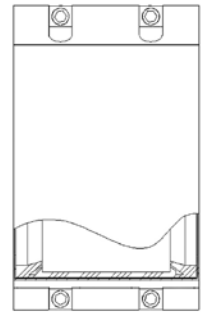
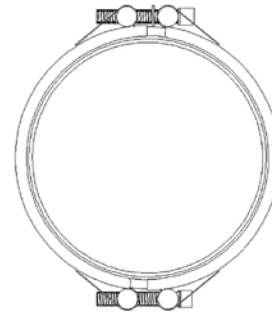


Fig. 6 / Repair of a pipe above ground, with different pipe material and diameters.

SERIES 100 / 2 Closures

Width 135 mm / all-stainless steel.

CÓDE	TOLERANCE (mm)	WIDTH (mm)	NOMINAL PRESSURE (bar)	WEIGHT/kg +/- 2%	TORQUE (Nm)
101-AA	88-100	135	25,0	2,64	35,0
101-AB	98-110	135	25,0	2,71	35,0
102-AA	108-120	135	24,6	2,78	35,0
102-AB	118-130	135	24,6	2,85	35,0
103-AA	128-140	135	21,3	2,93	35,0
103-AB	138-150	135	21,3	3,00	35,0
104-AA	148-160	135	18,8	3,08	35,0
104-AB	158-170	135	18,8	3,15	35,0
105-AA	168-180	135	16,8	3,74	40,0
105-AB	178-190	135	16,8	3,81	40,0
106-AA	188-200	135	15,2	3,89	40,0
106-AB	198-210	135	15,2	3,96	40,0
107-AA	208-220	135	13,9	4,03	40,0
107-AB	218-230	135	13,9	4,10	40,0
108-AA	228-240	135	12,8	4,18	45,0
108-AB	238-250	135	12,8	4,25	45,0
109-AA	248-260	135	11,9	4,33	45,0
109-AB	258-270	135	11,9	4,40	45,0
110-AA	268-280	135	11,0	4,48	45,0
110-AB	278-290	135	11,0	4,55	45,0
111-AA	288-300	135	15,5	5,46	45,0
111-AB	298-310	135	15,5	5,55	45,0
112-AA	308-320	135	14,5	5,65	50,0
112-AB	318-330	135	14,5	5,74	50,0
113-AA	328-340	135	13,7	5,84	50,0
113-AB	338-350	135	13,7	5,93	50,0
114-AA	348-360	135	13,0	6,02	50,0
114-AB	358-370	135	13,0	6,11	50,0
115-AA	368-380	135	12,3	6,21	55,0
115-AB	378-390	135	12,3	6,30	55,0
116-AA	388-400	135	11,7	6,40	55,0
116-AB	398-410	135	11,7	6,49	55,0
117-AA	408-420	135	11,2	6,58	55,0
117-AB	418-430	135	11,2	6,67	55,0
118-AA	428-440	135	10,7	6,77	60,0
118-AB	438-450	135	10,7	6,86	60,0
119-AA	448-460	135	10,2	6,95	60,0
119-AB	458-470	135	10,2	7,05	60,0
* 120-AA	468-480	135	13,1	8,32	60,0
120-AB	478-490	135	13,1	8,43	60,0
121-AA	488-500	135	12,5	8,55	60,0
121-AB	498-510	135	12,5	8,66	60,0
122-AA	508-520	135	12,1	8,77	65,0
122-AB	518-530	135	12,1	8,88	65,0
123-AA	528-540	135	11,6	9,00	65,0
123-AB	538-550	135	11,6	9,11	65,0
124-AA	548-560	135	11,2	9,23	65,0
124-AB	558-570	135	11,2	9,33	65,0
125-AA	568-580	135	10,8	9,45	70,0
125-AB	578-590	135	10,8	9,56	70,0
126-AA	588-600	135	10,5	9,68	70,0
126-AB	598-610	135	10,5	9,78	70,0
127-AA	608-620	135	10,2	9,90	70,0
127-AB	618-630	135	10,2	10,01	70,0
128-AA	628-640	135	12,3	11,61	75,0
128-AB	638-650	135	12,3	11,74	75,0



* The products printed in bold have obtained the CE sign according to directive 97/23/CE. The other sizes comply with article 3 of the same directive.

SERIES 2000 / 2 Closures

Width 200 mm / All-stainless steel.

* The products printed in bold have obtained the CE sign according to directive 97/23/CE. The other sizes comply with article 3 of the same directive.

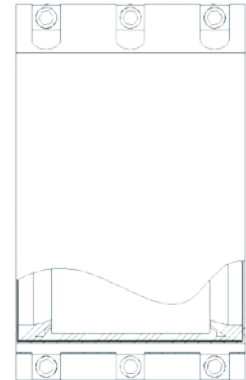
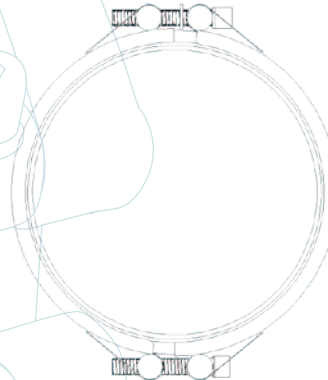
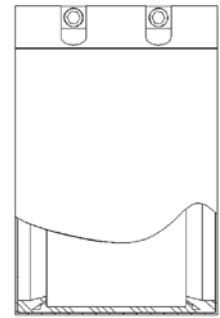
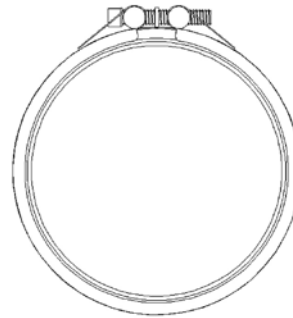
CÓDE	TOLERANCE (mm)	WIDTH (mm)	NOMINAL PRESSURE (bar)	WEIGHT/kg +/- 2%	TORQUE (Nm)
2.004-AA	148-160	200	18,8	6,06	35,0
2.004-AB	158-170	200	18,8	6,16	35,0
2.005-AA	168-180	200	16,8	6,28	40,0
2.005-AB	178-190	200	16,8	6,38	40,0
2.006-AA	188-200	200	15,2	6,49	40,0
2.006-AB	198-210	200	15,2	6,60	40,0
2.007-AA	208-220	200	13,9	6,70	40,0
2.007-AB	218-230	200	13,9	6,81	40,0
2.008-AA	228-240	200	12,8	6,92	45,0
2.008-AB	238-250	200	12,8	7,03	45,0
2.009-AA	248-260	200	11,9	7,14	45,0
2.009-AB	258-270	200	11,9	7,25	45,0
2.010-AA	268-280	200	11,0	7,36	45,0
2.010-AB	278-290	200	11,0	7,46	45,0
2.011-AA	288-300	200	15,5	8,75	45,0
2.011-AB	298-310	200	15,5	8,88	45,0
2.012-AA	308-320	200	14,5	9,02	50,0
2.012-AB	318-330	200	14,5	9,15	50,0
2.013-AA	328-340	200	13,7	9,29	50,0
2.013-AB	338-350	200	13,7	9,42	50,0
2.014-AA	348-360	200	13,0	9,57	50,0
2.014-AB	358-370	200	13,0	9,70	50,0
2.015-AA	368-380	200	12,3	9,84	55,0
2.015-AB	378-390	200	12,3	9,97	55,0
2.016-AA	388-400	200	11,7	10,11	55,0
2.016-AB	398-410	200	11,7	10,24	55,0
2.017-AA	408-420	200	11,2	10,38	55,0
2.017-AB	418-430	200	11,2	10,51	55,0
2.018-AA	428-440	200	10,7	10,65	60,0
2.018-AB	438-450	200	10,7	10,78	60,0
2.019-AA	448-460	200	10,2	10,92	60,0
2.019-AB	458-470	200	10,2	11,06	60,0
2.020-AA	468-480	200	13,1	12,86	60,0
2.020-AB	478-490	200	13,1	13,02	60,0
2.021-AA	488-500	200	12,5	13,19	60,0
2.021-AB	498-510	200	12,5	13,34	60,0
2.022-AA	508-520	200	12,1	13,51	65,0
2.022-AB	518-530	200	12,1	13,67	65,0
2.023-AA	528-540	200	11,6	13,84	65,0
2.023-AB	538-550	200	11,6	14,00	65,0
2.024-AA	548-560	200	11,2	14,16	65,0
2.024-AB	558-570	200	11,2	14,32	65,0
2.025-AA	568-580	200	10,8	14,49	70,0
2.025-AB	578-590	200	10,8	14,65	70,0
2.026-AA	588-600	200	10,5	14,81	70,0
2.026-AB	598-610	200	10,5	14,97	70,0
2.027-AA	608-620	200	10,2	15,14	70,0
2.027-AB	618-630	200	10,2	15,30	70,0
2.028-AA	628-640	200	12,3	17,57	75,0
2.028-AB	638-650	200	12,3	17,75	75,0
2.029-AA	648-660	200	11,9	17,94	75,0
2.029-AB	658-670	200	11,9	18,13	75,0
2.030-AA	668-680	200	11,6	18,32	75,0
2.030-AB	678-690	200	11,6	18,51	75,0
2.031-AA	688-700	200	11,3	18,70	75,0
2.031-AB	698-710	200	11,3	18,89	75,0
2.032-AA	708-720	200	11,0	19,08	80,0
2.032-AB	718-730	200	11,0	19,26	80,0
2.033-AA	728-740	200	10,7	19,45	80,0
2.033-AB	738-750	200	10,7	19,65	80,0
2.034-AA	748-760	200	10,4	19,84	80,0

CÓDE	TOLERANCE (mm)	WIDTH (mm)	NOMINAL PRESSURE (bar)	WEIGHT/kg +/- 2%	TORQUE (Nm)
2.034-AB	758-770	200	10,4	20,02	80,0
2.035-AA	768-780	200	10,1	20,22	85,0
2.035-AB	778-790	200	10,1	20,41	85,0
2.036-AA	788-800	200	11,9	24,39	85,0
2.036-AB	798-810	200	11,9	24,61	85,0
2.037-AA	808-820	200	11,6	24,83	85,0
2.037-AB	818-830	200	11,6	25,05	85,0
2.038-AA	828-840	200	11,3	25,27	90,0
2.038-AB	838-850	200	11,3	25,49	90,0
2.039-AA	848-860	200	11,0	25,71	90,0
2.039-AB	858-870	200	11,0	25,92	90,0
2.040-AA	868-880	200	10,8	26,14	90,0
2.040-AB	878-890	200	10,8	26,35	90,0
2.041-AA	888-900	200	10,5	26,58	90,0
2.041-AB	898-910	200	10,5	26,80	90,0
2.042-AA	908-920	200	10,3	27,02	95,0
2.042-AB	918-930	200	10,3	27,23	95,0
2.043-AA	928-940	200	10,1	27,45	95,0
2.043-AB	938-950	200	10,1	27,67	95,0
2.044-AA	948-960	200	13,2	34,33	95,0
2.044-AB	958-970	200	13,2	34,59	95,0
2.045-AA	968-980	200	12,9	34,87	100
2.045-AB	978-990	200	12,9	35,14	100
2.046-AA	988-1000	200	12,7	35,41	100
2.046-AB	998-1010	200	12,7	35,69	100
2.047-AA	1008-1020	200	12,4	35,97	100
2.047-AB	1018-1030	200	12,4	36,24	100
2.048-AA	1028-1040	200	12,2	36,51	105
2.048-AB	1038-1050	200	12,2	36,79	105
2.049-AA	1048-1060	200	12,0	37,07	105
2.049-AB	1058-1070	200	12,0	37,33	105
2.050-AA	1068-1080	200	11,7	37,61	105
2.050-AB	1078-1090	200	11,7	37,88	105
2.051-AA	1088-1100	200	11,5	38,16	105
2.051-AB	1098-1110	200	11,5	38,42	105
2.052-AA	1108-1120	200	11,3	38,70	110
2.052-AB	1118-1130	200	11,3	38,98	110
2.053-AA	1128-1140	200	11,1	39,25	110
2.053-AB	1138-1150	200	11,1	39,52	110
2.054-AA	1148-1160	200	10,9	39,80	110
2.054-AB	1158-1170	200	10,9	40,08	110
2.055-AA	1168-1180	200	10,8	40,35	115
2.055-AB	1178-1190	200	10,8	40,62	115
2.056-AA	1188-1200	200	10,6	40,90	115
2.056-AB	1198-1210	200	10,6	41,17	115
2.057-AA	1208-1220	200	10,4	41,45	115
2.057-AB	1218-1230	200	10,4	41,72	115
2.058-AA	1228-1240	200	10,2	42,00	120
2.058-AB	1238-1250	200	10,2	42,26	120
2.059-AA	1248-1260	200	10,1	42,54	120
2.059-AB	1258-1270	200	10,1	42,82	120
2.060-AA	1268-1280	200	12,4	51,38	120
2.060-AB	1278-1290	200	12,4	51,70	120
2.061-AA	1288-1300	200	12,2	52,03	120
2.061-AB	1298-1310	200	12,2	52,35	120
2.062-AA	1308-1320	200	12,0	52,69	125
2.062-AB	1318-1330	200	12,0	53,02	125
2.063-AA	1328-1340	200	11,9	53,36	125
2.063-AB	1338-1350	200	11,9	53,68	125
2.064-AA	1348-1360	200	11,7	54,01	125
2.064-AB	1358-1370	200	11,7	54,33	125

SERIES S-500 / 1 Closure

Width 135 mm / All-stainless steel.

CÓDE	TOLERANCE (mm)	WIDTH (mm)	NOMINAL PRESSURE (bar)	WEIGHT/kg +/- 2%	TORQUE (Nm)
502	60-63	135	25,0	1,31	30
503	63-66	135	25,0	1,34	30
506	73-77	135	25,0	1,41	30
508	87-91	135	25,0	1,49	30
510	98-102	135	25,0	1,57	30
511	99-105	135	24,4	1,58	30
512	104-110	135	23,3	1,61	30
513	109-115	135	22,3	1,67	30
514	114-120	135	21,3	1,70	30
515	119-125	135	20,5	1,73	30
516	124-130	135	19,7	1,76	30
517	129-135	135	23,7	2,24	35
518	134-140	135	22,9	2,27	35
519	139-145	135	22,1	2,31	35
520	144-150	135	21,3	2,35	35
521	148-158	135	20,3	2,41	35
522	158-168	135	19,0	2,49	35
523	168-178	135	18,0	2,56	35
524	178-188	135	17,0	2,63	35
525	188-198	135	16,2	2,71	35
526	198-208	135	15,4	2,78	35
527	208-218	135	17,7	2,86	35
528	218-228	135	14,0	2,93	35
529	228-238	135	13,4	3,01	40
530	238-248	135	12,9	3,08	40



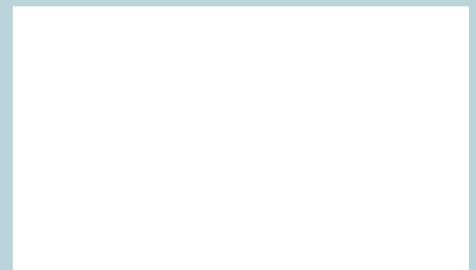
NOTE

The clamps' tolerance ranges indicated in this catalogue refer to the outside diameter of the pipe.



www.hermeticasf.com

Distributed by:



MADE IN SPAIN
Desarrollos Hidráulicos SF, S. L.
CIF: B-91415935