

## SERIES 10 / WIDTH 135MM

### OPENABLE REPAIR CLAMP

#### / CONFIGURATION

**2 Closures**

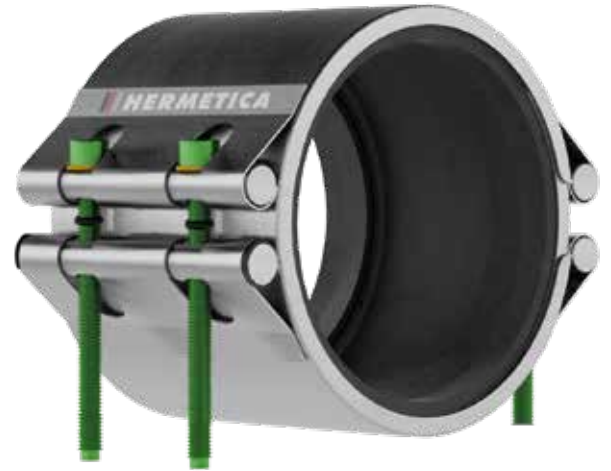
**Opening lock** 2 screws 130 mm length

**Hinge lock** 2 screws 100 mm length

**Hold-ON** and **PILOTO** technology

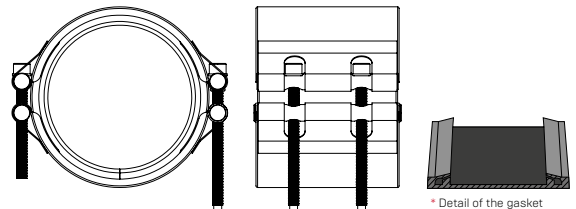
**Distance between lips** 70 mm

All stainless steel coupling for all kind of pipe materials like steel, asbestos cement, cast iron, polyethylene\*, PVC, GRP, etc.



#### / MATERIALS

Casing:	Stainless steel AISI 304 or AISI 316
Reinforcement Sheet:	Stainless steel AISI 304 or AISI 316 welded
Screws:	Stainless steel AISI 304 or AISI 316 Teflon coating (PTFE) Self-centering design (PILOTO Technology) O-Ring holding design (Hold-ON Technology)
Shafts:	Stainless steel AISI 304 or AISI 316 Mechanized slot for optimal screw head setting. O-Ring holding design: Prevent falls when the coupling is complete opened (Hold-ON technology)
Gasket:	EPDM rubber in accordance with regulation UNE-EN 681-1 (WA). Compatible with potable water according to: ACS, WRAS, DM 174, RD 140, KTW
Washers:	Brass
O-Ring:	NBR rubber



#### / SPECIFICATIONS

Available in diameters between 88 and 630mm (all diameters covered).  
Nominal pressure 10 bar (standard)\*\*

High anti corroding resistance due to the materials used for its production.  
European certificated stainless steel.

Permits axial movements up to 10mm. Angular deviation up to 2°.  
Shifts between pipe ends up to 3mm.

For temperatures between -10° C /14 F and +100° C /212 F

Pressures of up to 40 bar (depending on the diameter)

Test pressure = Working pressure x 1,5

#### / POTABLE WATER CERTIFICATIONS



RD 140/2003  
201/2001  
EN 681-1 (WA)

#### / INSTALLATION AND SAFETY ADVICE

Apply the recommended torque during installation.  
Do not exceed or add up indicated parameters of tolerance.  
Use safety shoes and gloves during fitting and maintenance.

#### / DISTRIBUTED BY:



#### / A PRODUCT OF DHSF®



All technical information reflected here is based on our experience, and on result of tests. Specifications are subject to change without previous advice. © 2019. Subject to technical modifications. For further information, please contact to your distributor.

\* Do not restrain axial pipe movements.  
\*\* Bigger ND and or NP 6, 16, 25 and 40 under request.